



THE UNIVERSITY OF THE THIRD AGE



# U3A of Highbridge Magazine

[www.u3ahighbridge.org.uk](http://www.u3ahighbridge.org.uk)

Issue 104

Jan/Feb 2019

## **Your Committee**

| <u><b>Position</b></u>             | <u><b>Name</b></u> | <u><b>Tel</b></u> |
|------------------------------------|--------------------|-------------------|
| Chairman                           | Vour Orchard       | 01278 788984      |
| Vice-Chairman                      | Rod Downing        | 01278 256895      |
| Secretary                          | Janet Preddy       | 01278 783743      |
| Assistant to Secretary             | Audrey Downing     | 01278 256895      |
| Treasurer                          | Alison Joyce       | 01278 784633      |
| Membership Secretary<br>(co-opted) | Barry Ede          | 07779 793463      |
| Committee Members                  | Philip Buoy        | 01278 783647      |
|                                    | Carole Loveridge   | 01278 780060      |
|                                    | Pete Manning       | 01278 780203      |
|                                    | Barbara Croker     | 01278 780260      |
|                                    | Bernard Martin     | 01278 787230      |

**Website:**

<http://www.u3ahighbridge.org.uk>

**Webmaster:**

Darryl Knight-Rees

**Magazine Editors:**

Darryl & Linda Knight-Rees (**phone: 01278 783081,**  
**email: [darrylinda@knight-rees.com](mailto:darrylinda@knight-rees.com)**)

**Printed By:**

Darryl Knight-Rees

**Distribution:**

Ann Smith (West Huntspill), Fay Burston, Mary Akers,  
Chris Winter, Oliver Cox, Thelma Tripp, Marion Wright  
and all who give a hand!

**Next Magazine Deadline:**

**February 25th 2019**

Copyright © U.3.A. of Highbridge. All rights reserved. No part of this magazine may be reproduced by any means without the prior permission of the copyright holders. The publishers cannot accept responsibility for any unsolicited material or for the views of contributors.

**Note:** In accordance with the requirements of the General Data Protection Regulation 2018, information relating to all of the U3A of Highbridge's members will be held on a computerised database and will be used solely for the U3A of Highbridge's business and communications.

## Chairman's Message

Hello everyone ,

I hope you all had a good Christmas.

As we start 2019 we have much to look forward to. There is our holiday to Newquay in April and another later in the year to the Isle of Wight.



Also, some of the Away Day's have been arranged, plus our usual groups to attend and, the highlight of the week, our Wednesday coffee mornings for a catch up.

This year will be the end of my term as Chairman. I would like to say thank you to my fellow committee members for their support this past three years, and I trust you will give the same support to the next Chairman.

It just remains for me to wish you all A Happy & Healthy New Year.

Your Orchard.

Chairman.



## **Club News**

### **Notable Dates**

There will be no coffee morning on Wednesday 27th February due to blood donors.

There will be no Kurling on Monday 11th March, no Coffee Morning on Wednesday 13th March, and no Table Tennis on Thursday 14th March due to the Highbridge Festival of the Arts.

### **Annual Lunch**

The next Annual Lunch will take place as usual at the Beachcomber in Brean on Wednesday March 20th 2019. Price is £15 for everyone this year. You can find the booking form at the back of this magazine.

## **Members Contributions**

### **Somerset Churches 12**

#### **St. Mary's Parish Church, Bridgwater**

With a medieval church at its core St. Mary's church has been here for about eight hundred years. It is dedicated to Saint Mary the Virgin, built on a site or an earlier church by William Briwere in the early 13th century. Much of the church, chapels, nave and chancel were added between the 14th and 16th centuries. The interior of the building includes a 13 by 8 feet painting off the Descent from the Cross of Spanish or Italian origin given to the church by Anne Poulett MP for Bridgwater in 1775. It was apparently captured when a Spanish warship was taken as a prize. The

artist is unknown and is now used as the altarpiece of the church.

The spire which can be seen for miles around was built in 1367, and is 114 feet 7.5 inches high and sits on top of the 64 feet tower. Within the tower are eight bells, the oldest being from 1617 with further bells being added through the following two hundred years.

In July 1685, during the Monmouth Rebellion, the Duke of Monmouth watched from the tower as the forces of King James II assembled at Weston Zoyland, under the command of the Earl of Faversham prior to the Battle of Sedgemoor. It is said that the Duke used this church as a base before marching his troops to slaughter in the fields of Sedgemoor.

### St. Michael Church, Enmore

Many churches built upon hills overlooking the sea, and on rocky islands not far from the mainland are dedicated to St. Michael. The date of the earliest church built upon such a lovely site looking out to the Severn sea, is unknown but one can well believe that such a site on the eastern edge of the Quantock forest, in full view of the rising sun was a consecrated spot even before the earliest church was built.

After the Norman Conquest the Manorial Rights of Enmore were given to a William Mallet friend of William the Conqueror about 1100. This well known family lived in Enmore for over 500 years when the property passed into the hands of the Earl of Egmont who lived in The castle next to the church.

It was not until the 15th century that the church tower was added. Previous to 1897 there was in the tower a peal 5 bells, the inscription on the new treble bell told its own story - "Thomas Palfrey Broadmead gave me AD1897 in the 60th year of the reign of Queen Victoria". The earliest bell is dated 1647 the others are 1734, 1796(2), and 1823.

### St. Margaret's Church, Spaxton

The existence of a rural deanery of Spaxton in the later 12th century suggests that the church may have begun as a minster, and the building appears to be of the 11th century. The church of St. Margaret so named in 1742 was dedicated in the middle ages and until 1536 or later to St. Mary. The three-bay nave has a south aisle and includes Norman herring-bone stonework. The tower can be dated to 1434 from a will bequeathing money for its construction it was extended a century later. It contains a peal of six bells, two of which date from the late 17th century. There are beautifully carved bench ends in the nave dating from 1561. The date 1720 and the names of pew owners are to be found on several book rests and the pulpit has panels from the late 16th or 17th century.

### The church of St. Mary, Nether Stowey

The church of The Blessed Virgin Mary, so dedicated in the late 12th century, comprises a chancel with north vestry, nave with north and south aisles with south porch and western tower. The original medieval church was a small building with a nave of three bays, its last additions evidently dating from the 14th century. Pressure for a further extension resulted in the complete rebuilding of the church, with the exception of the tower. Displayed over the chancel arch is the coat of arms of the Royal Chapel of St. George Winsor. The cannons of St. George's are the patrons of St. Mary's. There are six bells of which five date from the 18th century. These were recast in 1914, when the treble was added.

On leaving the church, Thomas Poole's grave can be seen to the right. Known as a generous benefactor, it was he who helped create the Friendly societies, which were the forerunner to the National Heath Service. One of Poole's famous proteges was Samuel Taylor Coleridge who lived in the village.

Lunch was taken at the Quantock Gate.

Bernie.....

## **Strolling Early Winter**

With the torrential overnight rain and threat of more to come around lunch time we needed somewhere dry under foot, so headed for Downend. We strolled around the roads of this hamlet, now separated from the village of which it was part. The saving grace being a foot bridge over the motorway which at least allows cyclists, horse riders and of course walkers access to Puriton with its few shops, church, village hall and pub. The Puriton Inn is the only one to survive, as the Exchange Inn in Downend could not cope with the restriction in the customer supply artery. There are mobile homes established in two sites, one single in a layby and two on a well laid out plot of ground, there are also some very nice individually designed houses. We crossed the bridge, and several members of the group looked around the show house on one of the two recently built small estates. The village Inn received our patronage for lunch.

For our second walk in November the month was living up to its gloomy reputation. There had been rain early in the morning and the sky remained overcast, again somewhere firm underfoot was needed. After discussion, eleven of us set off for Bradney to walk along the King Sedgemoor Drain. There are some benches, arranged to look a little like a stile, about a mile along the path and I took the opportunity to perch while the others



walked onto the next road bridge. Bernie had stayed with me and we made our way back to the cars, meeting Mary on the bridge and arriving only a little before the rest of the group. During our return walk we saw a canal barge laden with clay heading up stream. We were puzzled as to where it may be taking its load. The main group said dredging was being carried out further along, so possibly bank repairs were also in progress. A short drive down the road took us to the Knowle Inn where we availed ourselves of their dining room as our usual tables at the back of the pub are less cosy for this time of year. Keith proudly informed us he was going to stick with his healthy eating routine and insisted on a photo to prove it. I will leave judgement to you!

The forecast gale had not arrived so a sheltered walk was not needed. The seven of us that gathered in the car park decided to take advantage of the sunshine and go to Brean. Parking in the National Trust car park was our first challenge. After about ten attempts Denise persuaded her membership card to work but other cards were unsuccessful! The café told another unsuccessful member to leave the card in the windscreen so we followed suit and set off. Most of us had never walked the footpath along the bottom of the hill so that was the route we took. We passed the farm and climbed up a gentle slope onto the River Axe bank which at that point runs parallel to the road. Half a mile was enough for me so I turned back, the others walked on. There were a variety of bird calls from across the Axe estuary but I could not identify them. Mary and I waited over a cup of coffee in the NT café and the group joined us for lunch. Mary accidentally knocked a pot of forks onto the floor, Keith apologised and said “she’s not bad for her age and I do like to take her out!” The service was quick and friendly. All in all December strolling started well.

Paula Cook



## **Poem from a Member**

Hail all men of remembrance

Hail all soldiers held in a trance

Hail all soldiers now at rest

Giving your country your very best

Giving your country the dawn of your lives

Now leaving behind widows who once were wives

Our grieving and sadness never lessen

But lessons to learn it must begin.....

Learning to Love is the only way

Opening our hearts to this very day

In remembrance of you and the sacrifice made

Please do not think you have been betrayed

For not just on the Armistice Day

Are thoughts and blessings sent your way

But every day in gratitude

A prayer is sent to you - from loving hearts that walk this earth

Please know that this is true.

By MC

## Monthly Draw

|                       |        |                                             |
|-----------------------|--------|---------------------------------------------|
| November 24th<br>2018 | No. 10 | Paula Cook, Denise Godby<br>and Janet Raine |
|-----------------------|--------|---------------------------------------------|

Each received £25.00

### **HANDYMAN SERVICE**

#### **Carpenter -- Painter – Decorator**

**Need that door adjusting?  
Thinking about decorating?  
Want a shelf put up?**

**All those ‘little’ jobs around the house you keep  
meaning to fix but cannot get around to doing!**

**Please feel free to contact: ---- F. J. Hales**

**Home: - 01278 788247 - - - Mobile: - 07939.664538**

**For friendly, no obligation advice/estimate.**



**ALL ASPECTS OF TREE & HEDGE WORK UNDERTAKEN**

- **Tree Felling**
- **Dismantling**
- **Crown Reduction**
- **Pruning**
- **Hedge Trimming**
- **Logs And Woodchip For Sale**

**Telephone: 0800 085 8793**

**Mobile: 07590 594 699**

**Fully Insured • Friendly & Professional Service**

## Group Activities

### Monday

| Week                              | Time           | Group       | Venue | Leader                             | Tel              |
|-----------------------------------|----------------|-------------|-------|------------------------------------|------------------|
| 1 <sup>st</sup>                   | 10.00 to 12.00 | Card Making | S.H.  | Rose Bateman                       | 795906           |
| 2 <sup>nd</sup> & 4 <sup>th</sup> | 2.00 to 3.30   | Kurling     | C.H.  | Stan Vousden-White<br>Sybil Tilley | 781567<br>787054 |
| 4 <sup>th</sup>                   | 2.00 to 4.00   | Beading     | P.H.  | Rose Bateman                       | 795906           |
| 2 <sup>nd</sup> & 4 <sup>th</sup> | 10.00 to 11.30 | Calligraphy | S.H.  | Ken Burston                        | 782529           |

### Tuesday

| Week                              | Time                           | Group                   | Venue | Leader       | Tel    |
|-----------------------------------|--------------------------------|-------------------------|-------|--------------|--------|
| 1 <sup>st</sup> & 3 <sup>rd</sup> | 2.00 to 4.00                   | Mosaics                 | P.H.  | Alison Joyce | 784633 |
| 2 <sup>nd</sup> & 5 <sup>th</sup> | 2.00 to 4.00                   | Photography             | S.H.  | Pete Manning | 780203 |
| Every                             | 2.15 to 5.00                   | Board Games             | G.H.  | Pat Gray     | 786905 |
| Every                             | 10.00 to 12.00<br>2.00 to 4.00 | Patchwork /<br>Quilting | P.H.  | Ann Lismore  | 787607 |

### Wednesday

| Week            | Time         | Group       | Venue | Leader       | Tel    |
|-----------------|--------------|-------------|-------|--------------|--------|
| 3 <sup>rd</sup> | 2.30 to 4.30 | Card Making | S.H.  | Rose Bateman | 795906 |

**EVERY WEDNESDAY: 10.00 to 12.00 COFFEE MORNING**

### Thursday

| Week                                                | Time         | Group        | Venue  | Leader           | Tel    |
|-----------------------------------------------------|--------------|--------------|--------|------------------|--------|
| 2 <sup>nd</sup> , 4 <sup>th</sup> & 5 <sup>th</sup> | 2.00 to 4.00 | Barn Dancing | M.C.H. | David Napper     | 792371 |
| Every                                               | 1.45 to 3.45 | Art          | S.H.   | Ken Burston      | 782529 |
| Every                                               | 2.00 to 4.00 | Table Tennis | C.H.   | Carole Loveridge | 780060 |

## Group Activities

### Friday

| Week                              | Time          | Group             | Venue | Leader               | Tel    |
|-----------------------------------|---------------|-------------------|-------|----------------------|--------|
| 1 <sup>st</sup> & 3 <sup>rd</sup> | 11.30 to 1.00 | Skittles          | L.I.  | Philip Buoy          | 783647 |
| 3 <sup>rd</sup>                   | 10.00 to ??.  | Walking           |       | Audrey & Rod Downing | 256895 |
| 2 <sup>nd</sup> & 4 <sup>th</sup> | 10.00 to ??.  | Strollers         |       | Self-Regulating      | 792529 |
| 5 <sup>th</sup>                   | 10.00 to ??.  | Somerset Churches |       | Bernard Martin       | 787230 |

### Occasional

| Weekdays   | Activity  | Contact                          | Tel              |
|------------|-----------|----------------------------------|------------------|
| Wednesdays | Luncheons | Pat Clipstone                    | 788128           |
| Thursdays  | Away Days | Vour Orchard<br>Carole Loveridge | 788984<br>780060 |
| Varies     | Holidays  | Christine Owen                   | 784500           |

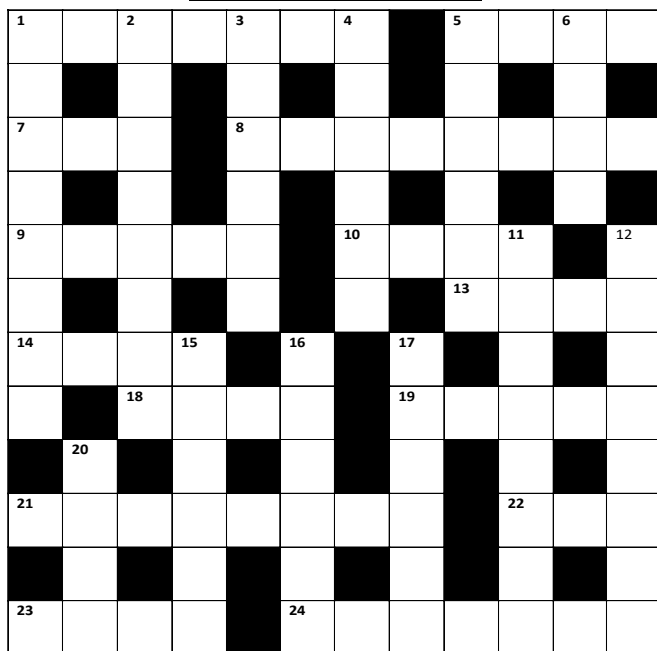
Changes since last issue are highlighted in yellow.

### Legends

|                                   |                          |
|-----------------------------------|--------------------------|
| S.H. .... Southwell House         | C.H. .... Community Hall |
| P.H. .... Private House           | G.H. .... Gospell Hall   |
| M.C.H. .... Methodist Church Hall | L.I. .... Lighthouse Inn |

**Should you wish to join a Group please first contact its Leader.**

## Crossword #26



## Crossword #26 Clues

### ACROSS

1. Rain (7)
5. Own (4)
7. Tortoiseshell for example (3)
8. Drug (8)
9. Virtue (5)
10. Scrimped (4)
13. Repeat (4)
14. Crave (4)
18. Split (4)
19. Sullen (6)
21. 'Be sad Rob' [anag] (8)
22. Wrath (3)
23. Heredity unit (4)
24. Removed (7)

### DOWN

1. Certificate for example (8)
2. 'Inert ten' [anag] (8)
3. Peak (6)
4. Nests (6)
5. Siren (6)
6. Empty (4)
11. 'Mole dish' [anag] (8)
12. Welsh town (8)
15. Relegate (6)
16. Induced (6)
17. Among (6)
20. Capable (4)

Solution on page 20



# DKR Computing

## Computer & Network Support

**Darryl Rees**  
IT Consultant

### Our Services

- \* Computer Health Checks (Servicing)
- \* Virus and Other Malware Detection and Removal
- \* Computer, Phone, Tablet & Printer Troubleshooting
- \* Microsoft Windows Upgrades
- \* Computer Memory and Hard Drive Upgrades
- \* Home Networking Installation and Configuration (WiFi & Wired)
- \* Advice on Best Equipment and Software to Buy
- \* One-to-one Training for Computers, Phones and Tablets
- \* Data Restore from Hard Drives and USB Flash Drives
- \* Website Creation and Hosting

\*\*\* Discounts for U3A Members \*\*\*

\*\*\* Callouts welcome \*\*\*

\*\*\* 30 Years experience as an IT Professional \*\*\*

West Huntspill, Somerset

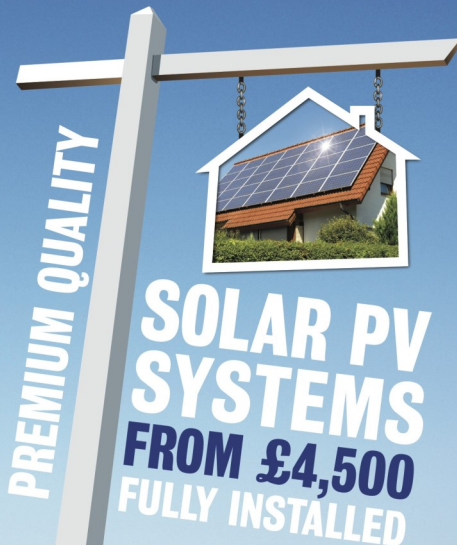
Tel: 01278 783081

Mobile: 07973 512709

Email: [darryl@knight-rees.com](mailto:darryl@knight-rees.com)

[www.dkr-computing.co.uk](http://www.dkr-computing.co.uk)

**No Fix No Fee!**



Local • Professional  
**Competitive**

**01278 781821**

[info@greener-way.com](mailto:info@greener-way.com)



[www.greener-way.com](http://www.greener-way.com)

## **Group News**

### **Skittles Group**

At the last meeting of the year the skittles group held their annual lunch and presented the yearly prizes. Bernard Martin was the top player over-all and Brenda Hooper the leading lady.

The winner of the Christmas competition was Wendy Hughes. Congratulations to them all.

As a group we would like to thank the members who work hard 'sticking up' for us during the year.

We were pleased to welcome some new players this year, and look forward to seeing everyone back to our new year on 4th January.







## **Away Days**

Several away days are planned for this year. Please see the highlighted entries in the Calendar on page 22 for more details. Prices and further details TBA.

## **Joke Corner**

### **Is this part of God's Plan for Senior Citizens?**

The Medical Profession tell us that most senior citizens do not get enough exercise. So, in His wisdom, did God decreed that senior citizens should become forgetful? This means they would have to search for their glasses, keys and many other things, thus ensuring they did more walking, during their search. When God looked down He thought that it was good.

Then God saw there was another way to increase exercise. In His wisdom He made senior citizens lose some of their co-ordination so they would drop things, requiring them to bend, reach and stretch to retrieve them. When God looked down He thought that was good also.

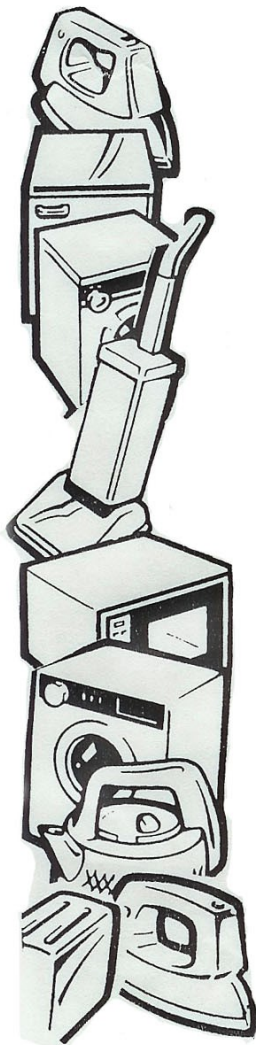
Then God considered the function of bladders and decided senior citizens would have additional calls of nature, requiring more trips to the bathroom, thus providing even more opportunities for exercise. When God looked down He saw that it was good.

So, if you find as you get older you are getting up and down more, remember its God will.

It's all in your best interest, even though you might mutter about it under your breath.

# Dople's

## DOMESTIC APPLIANCE REPAIR SERVICE



- REPAIRS TO MOST MAKES OF WASHING MACHINE, VACUUM CLEANER, TUMBLE DRYER, FRIDGE, FRIDGE-FREEZER, TWIN-TUBS, DISHWASHER.
- AN EXTENSIVE RANGE OF VACUUM CLEANER BAGS AND SPARES
- A WIDE RANGE OF NEW AND RECONDITIONED WASHING MACHINES
- A RANGE OF KETTLES, IRONS AND TOASTERS.
- REPAIRS TO SMALL DOMESTIC APPLIANCES (KETTLES, IRONS, TOASTERS)
- PANASONIC SERVICE CENTRE
- REPAIRS TO MICROWAVE OVENS
- A RANGE OF NEW MICROWAVE OVENS IN STORE
- SUPPLY COOKERS, HOBS, FRIDGES, FRIDGE-FREEZERS AND DISHWASHERS.
- SERVICE AGENTS FOR VAX, DAEWOO, SAMSUNG

27 Victoria Street • Burnham-on-Sea  
Somerset • TA8 1AN

**Tel: 01278 780486**

## Crossword #26 Answers

### ACROSS

1. DRIZZLE
5. HAVE
7. CAT
8. NARCOTIC
9. MERIT
10. EKED
13. REDO
14. NEED
18. TEAR
19. MOODY
21. ABSORBED
22. IRE
23. GENE
24. DITCHED

### DOWN

1. DOCUMENT
2. INTERNET
3. ZENITH
4. EYRIES
5. HOOTER
6. VOID
11. DEMOLISH
12. HOLYHEAD
15. DEMOTE
16. BRIBED
17. AMIDST
20. ABLE



## Sharon Elliott

Private Carer

Phone 01278788315

Mobile 07787787571

47 Huntspill Road

Highbridge

Somerset

[sharon-elliott47@talktalk.net](mailto:sharon-elliott47@talktalk.net)



---

# SANDRA

**Hairdressers**

**3 MARKET STREET**

**Highbridge**

**Somerset**

**TA9 3BW**

**Tel: 01278 784950**



**Peter  
The Painter**

**Mobile 07773010873**

**Home 01278 320253**

**HOMES INSIDE AND OUT  
GARDEN FURNITURE, SHEDS, FENCES**

**Free Quotes**

## Calendar

| <u>Date(s)</u>                 | <u>Details</u>                     | <u>Cost</u> |
|--------------------------------|------------------------------------|-------------|
| 2019                           |                                    |             |
| March 28th                     | Hestercombe House & Gardens        | TBA         |
| April 25th                     | Bowood House, Wiltshire            | TBA         |
| April 27th —<br>May 1st        | Holiday: Newquay                   | ??          |
| June ??                        | Sidmouth Folk Festival             | TBA         |
| July 17th                      | Exmouth & Jurassic Coast Boat Trip | TBA         |
| August 31st —<br>September 4th | Holiday: Isle of Wight             | From £244   |
| September ??                   | TBA                                | TBA         |
| October 24th                   | Bodenham Arboretum                 | TBA         |
| November 28th                  | Bath Christmas Markets             | TBA         |

Cheques to cover payments for all “Away Days”, Theatre trips and Holidays must be made payable to “U3A of Highbridge Social Account”

Please also add your name, address and phone number on the reverse of the cheque, this: -

a) helps to identify you on the passenger list, and

b) If a trip is cancelled you can be notified quickly.

**Annual Lunch**

at

**THE BEACHCOMBER INN, BREAN****WEDNESDAY 20<sup>TH</sup> MARCH 2019****MENU****Main Course:**

- 1 Traditional Roasted Topside of Devonshire Beef
- 2 Local Roasted Somerset Turkey
- 3 Vegetarian Nut Roast (Blend of nuts, cous cous, etc.)

All served from their renowned carvery with a selection of freshly cooked seasonal vegetables, potatoes together with usual accompaniments.

**Desserts:**

- K Apple Pie with thick Devonshire custard
- L Fresh Fruit Salad with medley of fresh fruits serve with  
fresh double cream
- M Chocolate fudge cake
- N Cheese Platter, Cheddar, Stilton and Brie with biscuit selection

Coffee & after dinner mints

**Please see over for Prices and Booking Form**

## Annual Lunch

Wednesday 20<sup>th</sup> March 2019 at Beachcomber Inn Brean

12.00 noon for 12.30 p.m.

### **BOOKING FORM:**

#### **Price:**

Members & Guests:     £15.00

Name.....

I also wish to book a lunch for.....Guest/s

My choice from Menu is:

|             |   |  |         |   |
|-------------|---|--|---------|---|
| Main Course | 1 |  | Dessert | K |
|             | 2 |  |         | L |
|             | 3 |  |         | M |
|             |   |  |         | N |

Please indicate your choice/s

Would you please complete this booking form and take it with you when you book your lunch with Fay Burston?

Janet Preddy will be accepting bookings between 16<sup>th</sup> January and 27th February.

PAID..... DATE.....No.....